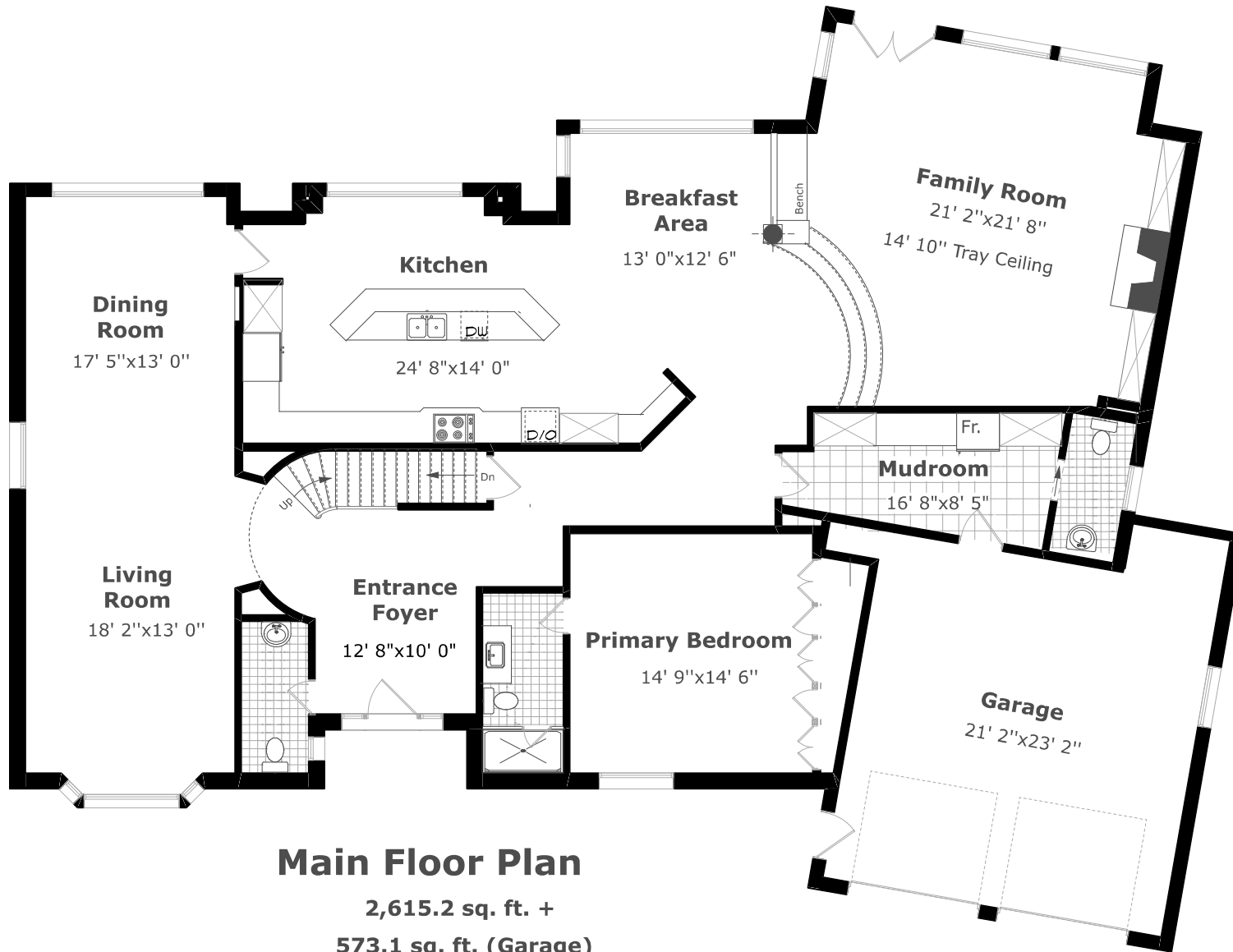


# 1138 Morrison Heights Drive

Scale (ft) 0 5 10 15 20 25

Scale (M) 0 1 2 3 4 5 6 7

October 2022



## Main Floor Plan

2,615.2 sq. ft. +

573.1 sq. ft. (Garage)

9' 0" Ceiling



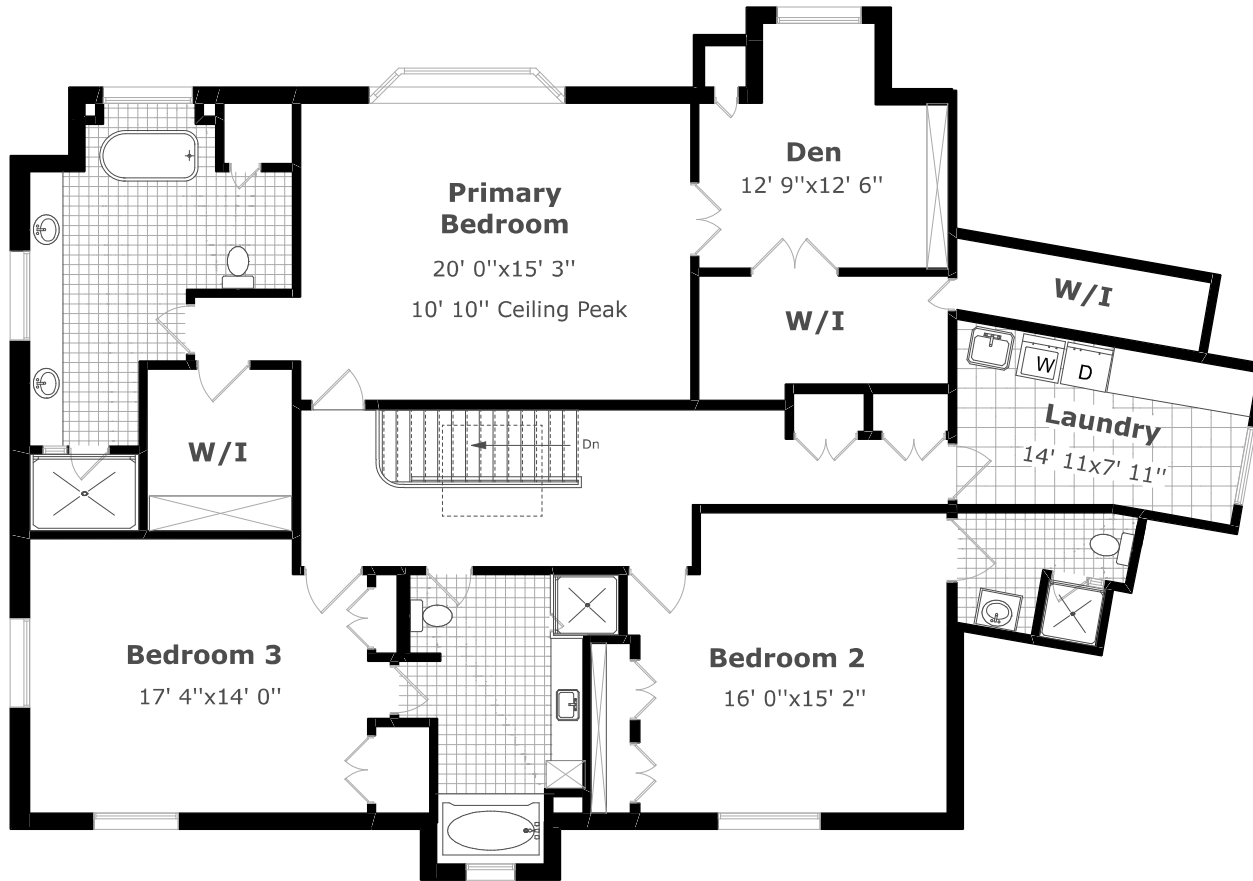
Measurements may not be 100% accurate. Floor Plans provided for illustrative purposes only. Room sizes not used to calculate area.

# 1138 Morrison Heights Drive

Scale (ft) 0 5 10 15 20 25

Scale (M) 0 1 2 3 4 5 6 7

June 2021



## 2nd Floor Plan

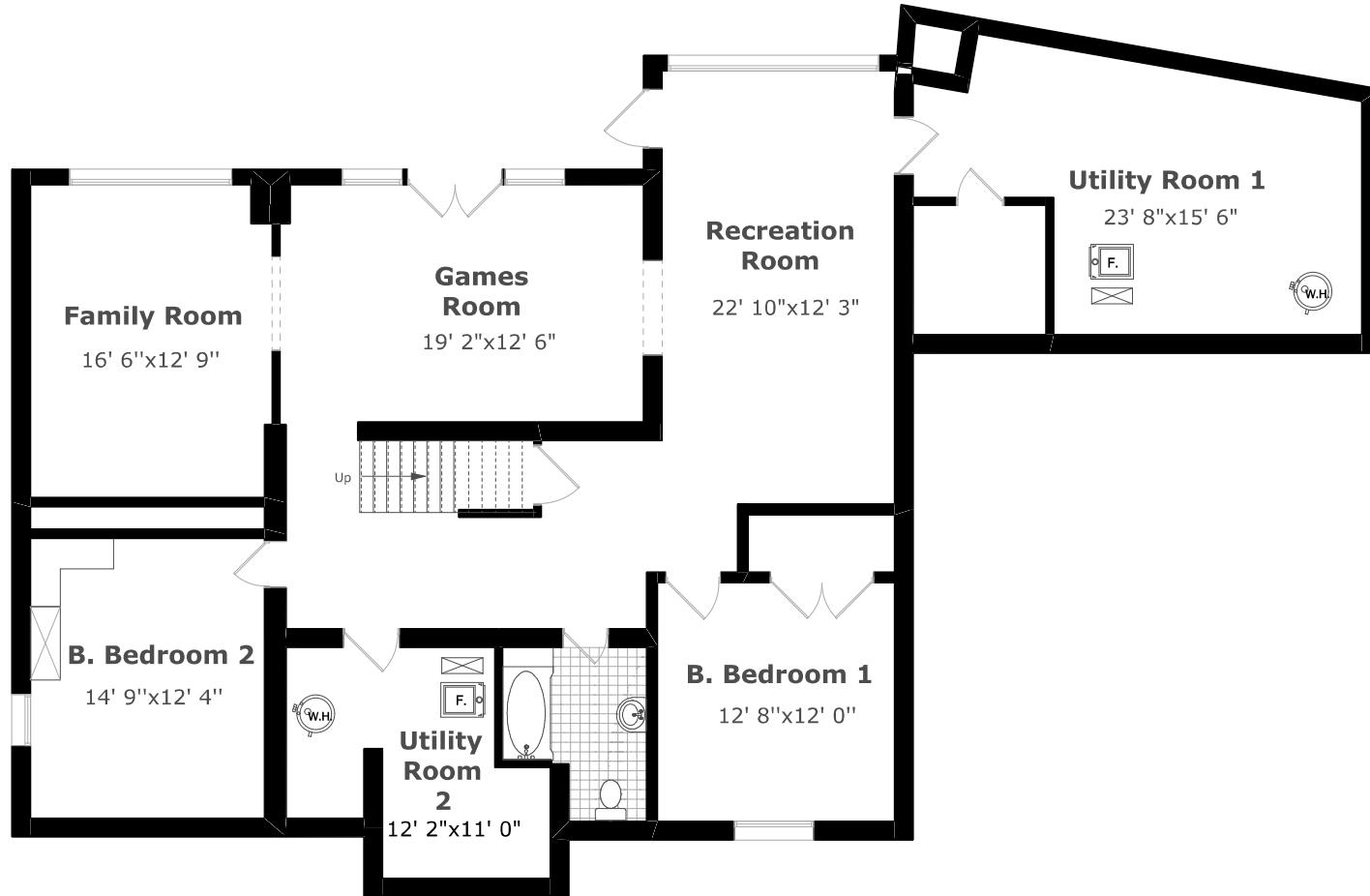
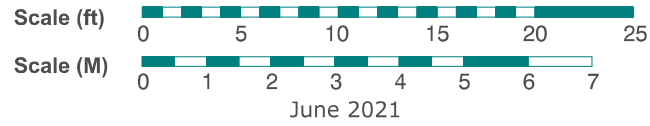
2,128.0 sq. ft.

9' 0" Ceiling



Measurements may not be 100% accurate. Floor Plans provided for illustrative purposes only. Room sizes not used to calculate area.

# 1138 Morrison Heights Drive



## Lower Level Plan

2,200.0 sq. ft.



Measurements may not be 100% accurate. Floor Plans provided for illustrative purposes only. Room sizes not used to calculate area.